

Chelsea Space

The Democratic Dish: Minton's Secessionist Ware From the Alessandra and Simon Wilson Collection

Chelsea Space

Curated by Cherie Silver

19 September - 26 October 2018



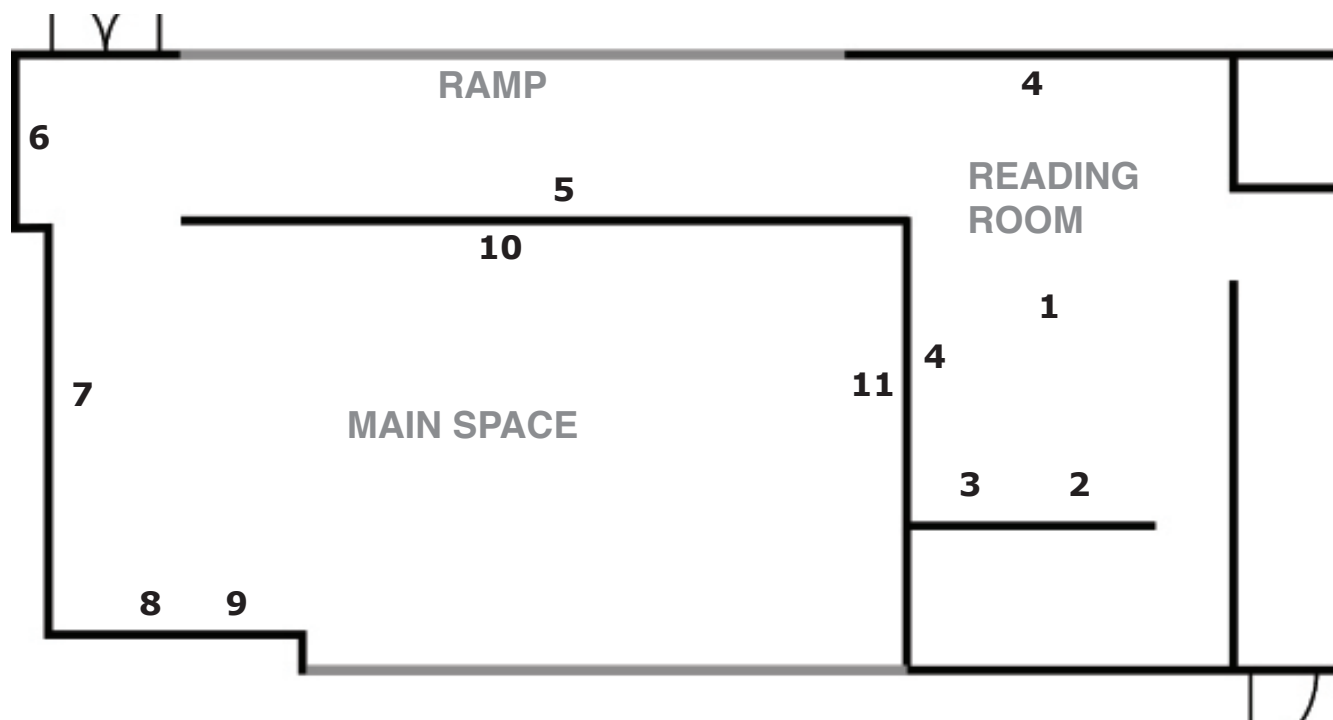
Detail of the printed mark found on the base of an early Minton's Secessionist example from the Alessandra and Simon Wilson collection.

Minton's was a British ceramic company established in 1793. From c1901-1916 they produced a range of pottery called **Secessionist Ware**, designed by **John W. Wadsworth** under the art directorship of **Léon Victor Solon**. The stylised floral and foliage designs constitute a major British contribution to the international style of **Art Nouveau**. However, Solon and Wadsworth named the collection after the leading European Art Nouveau grouping of the time, the Vienna Secession, whose first international exhibition had been held in Vienna in 1898. The use of industrial manufacturing methods meant the Minton's Secessionist range was more accessible to the popular market than other smaller studio or hand-made pottery.

This exhibition of chargers, toilet ware, vases, pedestals, flower holders, candlesticks, jardinières, a cheese stand, plates and other utilitarian wares, alongside archival material from the Minton Archive, will demonstrate the innovative approach to colour that Léon Solon contributed to the Secessionist range, combined with John Wadsworth's designs of often radical abstractions from plant forms. The exhibition will also examine Wadsworth's advocacy for the decorative arts, highlighting both Solon and Wadsworth's contribution to British design between 1900-1915.

LIST OF WORKS

Ceramics and selected publications courtesy the Alessandra and Simon Wilson Collection
Facsimile drawings and selected archive material courtesy the Minton Archive

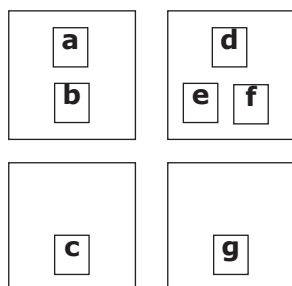


READING ROOM

1. Table Vitrine - Photograph Album

141 photographs mounted therein, in sections (vases, seaux, pedestals, umbrella stands, toilets, teapots, etc); 17 loose photographs inserted. All hand-coloured. 1 book; leather bound; good condition; title "Photographs & Sketches, Mintons Limited". Minton Archive SD1705 MS1608

2. Wall Cabinet



- Minton's Secessionist ware catalogue. Minton Archive SD 1705/MS1361
- Sir Thomas Malory, 'Le Morte D'Arthur', JM Dent, London, 1893. Cover design by Aubrey Beardsley, volume 1. Ex libris Simon Wilson
- Sketch book by John W. Wadsworth. Minton Archive SD 1705/MS4287.
- John W. Wadsworth, 'Designing From Plant Forms', 1910
Ex libris Simon Wilson
- Flower holder revealing Mintons Secessionist Ware stamp
- Butter dish
- Sketch book by John W. Wadsworth. Minton Archive SD 1705/MS4288

3. Selection of publications including:

- Atterbury, P. and Batkin, M., 'The Dictionary of Minton', Antique Collectors Club, Woodbridge (1990)
- Jones, J. 'Minton, The First Two Hundred Years of Design & Production', Royal Doulton, Swan Hill Press, (1993)
- Atterbury, P. and Aslin, A., 'Minton 1798-1910', Victoria and Albert Museum, London, (1976)
- 'Antique Collecting', December 2004 / January 2005, see pp18-23 for S. Wilson, 'Mintons Secessionist ware: A Triumph of English Art Nouveau'
- Atterbury, P., 'The Story of Minton', Royal Doulton
- Minton Archive Research Packs
- Greenhalgh, P., 'Essential Art Nouveau', Victoria and Albert Museum, London, (2000)

4. Facsimile drawings, selection from Minton Archive SD1705 MS1929 and SD1705 MS1866

RAMP

5. Facsimile drawings attributed to John W. Wadsworth, selection from Minton Archive MS1866
6. Art Nouveau style tile attributed to John W. Wadsworth, outlined in black slip and filled with lead glazes, 1901

MAIN SPACE

7. Enlarged Facsimile of drawing attributed to John W. Wadsworth, Minton Archive SD1705 MS1929
8. Facsimile Mintons Secessionist Ware publication, Minton Archive SD1705 MS1361
9. Selection of ceramics appearing in the Mintons Secessionist Ware publication (10)
10. Selection of 15" chargers (a large flat dish) (11).
11. Large selection of ceramics from the Alessandra and Simon Wilson Collection showing different colour ways, patterns, shapes and ornamentation. (55)

ACKNOWLEDGEMENTS

The Democratic Dish: Mintons Secessionist Ware would not have been possible without the generosity and encouragement of Simon Wilson, and the support of the staff at the Minton Archive, Stoke-on-Trent City Archives, including Chris Latimer and Andrew Dawson. The curator would like to acknowledge Arts Council England for additional funding support for this exhibition.

The Minton Archive

The Minton Archive was presented to the city of Stoke-on-Trent on 31 March 2015 by the Art Fund (with a contribution from the Wolfson Foundation) with substantial support from the National Heritage Memorial Fund and significant additional donations from Staffordshire County Council, The Pilgrim Trust, the Bamford Charitable Foundation, the bet365 Foundation (Denise Coates Foundation), William A. Cadbury Charitable Trust, Sir Siegmund Warburg's Voluntary Settlement, J Paul Getty Jr Charitable Trust and many other generous supporters.

<http://www.themintonarchive.org.uk/>

twitter:@MintonArchive

PUBLIC PROGRAMME

Make your own design inspired by the exhibition:

Throughout the exhibition visitors are invited to complete a template (physical or digital, available in Chelsea Space or at www.chelseaspace.org) inspired by the work on display. From the submissions, four will be selected to be turned into transfers and workshopped onto ceramic plate. **Submissions close on Friday 19 October**, with the judges' selection announced on Friday 26 October, the final day of the exhibition (drinks reception 5-8pm). The workshop for the winning designers will be led by Amy Hughes, ceramic artist and specialist ceramics technician at Chelsea College of Arts, on Saturday 3 November. The ceramics will then be on display for six weeks in the Chelsea Cafe opposites Chelsea Space (19 Nov - 14 Jan). Judges include: **Grayson Perry** RA, Turner Prize Winner and UAL Chancellor; **Donald Smith**, Director of Chelsea Space; and ceramic artist **Amy Jayne Hughes**.

Talks and Panel Discussion:

Collecting, Archiving, Making, and the Place of Ceramics in Art and Society Today

To coincide with the exhibition invited speakers will give presentations, following which there will be a panel discussion. Speakers include: **Simon Wilson**, art historian and former Curator of Interpretation at Tate; **Grant Gibson**, journalist and former editor of 'Crafts' (2007-2018), the world's leading magazine devoted to making; **Amy Jayne Hughes**, ceramic artist and specialist ceramics technician at Chelsea College of Arts; and **Cherie Silver**, curator of the exhibition and Programme Curator at Chelsea Space.

For more information and to book your place, visit: www.chelseaspace.org

18 October, 2pm - 5pm

Banqueting Hall

Chelsea College of Arts

Chelsea Space

Chelsea College of Arts

16 John Islip Street

London

SW1P 4JU

www.chelseaspace.org

info@chelseaspace.org

twitter:@CHELSEAspace

instagram:@chelseaspace